



School Lane, Wilburton, CB6 3RW

**CHEFFINS**



## School Lane

Wilburton,  
CB6 3RW

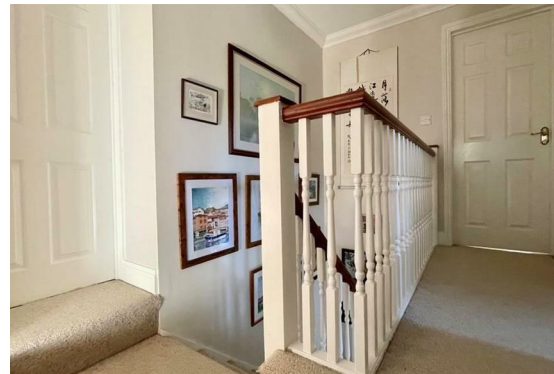
- Attractive Detached House
- Four Bedrooms (1 Ensuite)
- Lounge And Separate Dining Room
- Kitchen And Utility
- Private Garden
- Driveway And Garage
- Non Estate Location
- Freehold/Council Tax D/EPC D

An attractive detached house situated in a pleasant, no through lane and comprising entrance hall, cloakroom, lounge, dining room, kitchen, utility, four bedrooms (one ensuite) and bathroom. Outside there is a private garden, spacious driveway and garage.

4 2 2

**Guide Price £495,000**





## LOCATION

Wilburton has a range of village amenities and is conveniently situated 2 miles from the larger village of Haddenham and 6 miles from the Cathedral City of Ely. Cambridge is located 11 miles to the South with excellent access to London. Mainline rail services are situated at Ely to Cambridge and London





